

Henrietta Way Willow House

Elegant Georgian style five bedroom home offering adaptable accommodation
Built to a superior quality with conservation materials.

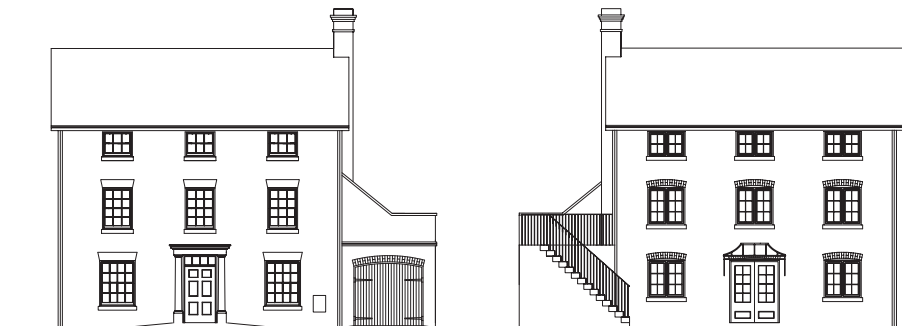


**Paul Martin
Homes**



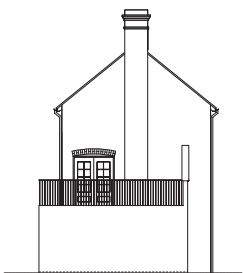
£495,000

Bedrooms	5
Bathrooms / Ensuites	3
Garages	1
Total Floor Area	2010 ft²
Garden / Patio Area	2800 ft²
Energy Rating	A

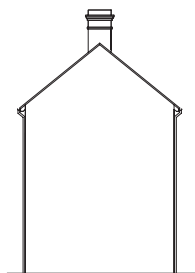


Front Elevation

Rear Elevation



East Facing Elevation



West Facing Elevation

Ground floor

- Georgian style entrance door to reception hallway with built in cloaks cupboard and easy access to cloakroom leading from hall.
- Pleasant open plan kitchen breakfast area, with show piece kitchen and space for table and chairs.
- Good sized utility area, with internal door to garage.
- Good sized dining room across from the kitchen.

First floor

- Guest bedroom with shower ensuite.
- Further bedroom.
- Superb first floor sitting room with featured log burner, double aspect windows and views to front and rear, with doors leading to roofed terraced area, with staircase leading down to gardens.

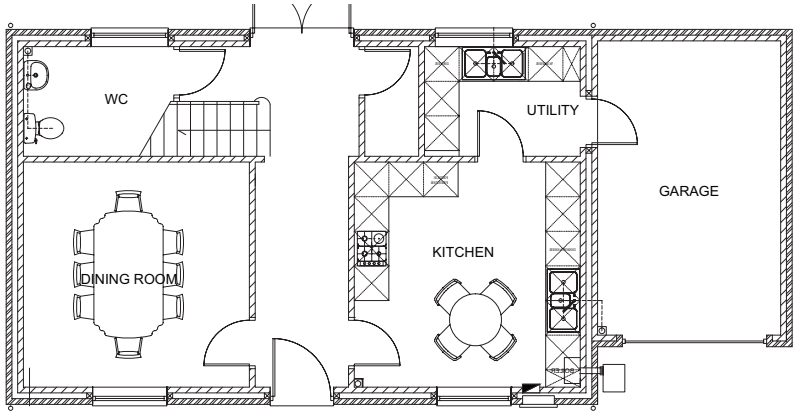
Second Floor

- Master bedroom with ensuite shower room.
- Pleasant landing area with windows overlooking gardens to the rear
- Two further double bedrooms
- Family bathroom.

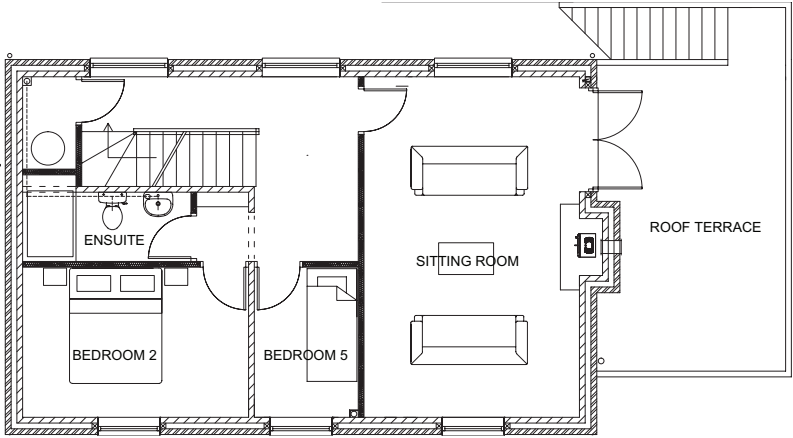
Outside

- Ample parking leading to garage
- Landscaped gardens, with extremely generous garden to the rear, with terrace area with rural gorge views.

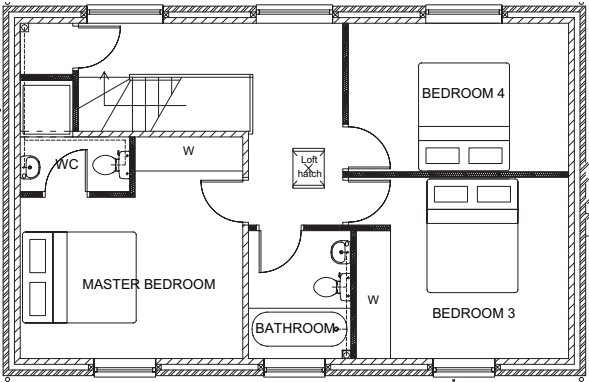
Willow House



Ground floor



First floor



Second floor

Illustration for information purposes only – please refer to Harwood for detailed information



Tel: 01952 881010 | www.goharwood.co.uk
broseley@harwoodbroseley.co.uk