

## Henrietta Way Sandringham House

Elegant Georgian style five bedroom home offering adaptable accommodation  
Built to a superior quality with conservation materials.



**Paul Martin  
Homes**



**£595,000**

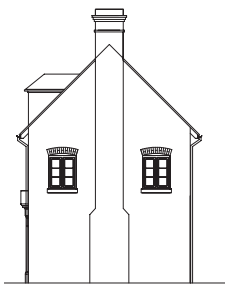
Bedrooms	5
Bathrooms	3
Garage	3
Total Floor Area	2208 ft <sup>2</sup>
Garden / Patio Area	2200 ft <sup>2</sup>
Energy Rating	<b>A</b>



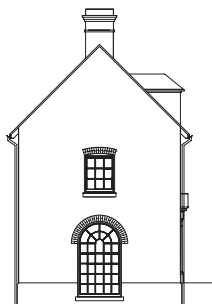
Front Elevation



Rear Elevation



North Facing Elevation



South Facing Elevation

### Ground floor

- Georgian style entrance door to reception hallway with easy access to cloakroom.
- Generous sized open plan kitchen and separate breakfast area, with show piece, kitchen, with windows to front and rear and oval window to side.
- A pleasant living room with featured log burner, with twin windows to the front aspect.

### First floor

- Extensive Master bedroom with ensuite and window to the front, rear.
- Two further bedrooms.
- Family bathroom, with luxury bath and separate shower cubicle.

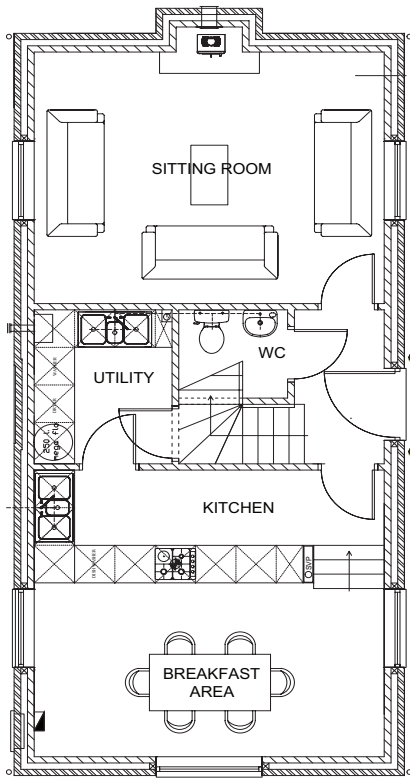
### Second floor

- Two further bedrooms, with velux windows to front, shower room, large landing.

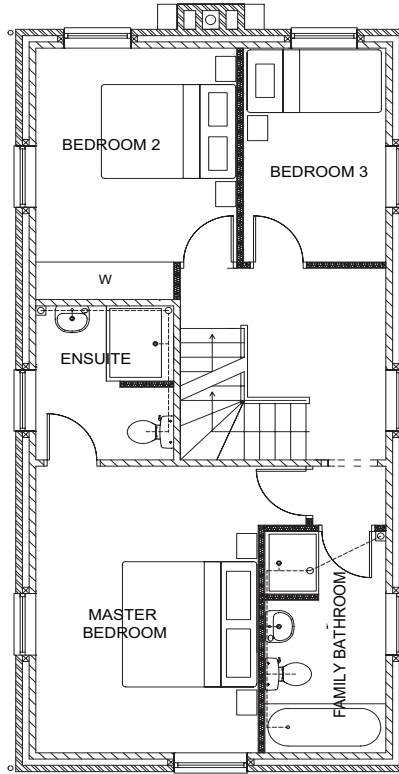
### Outside

- Extensive parking leading to detached triple garage.
- Extensive landscaped gardens, with extremely generous garden to the rear, with terrace area with rural gorge views.

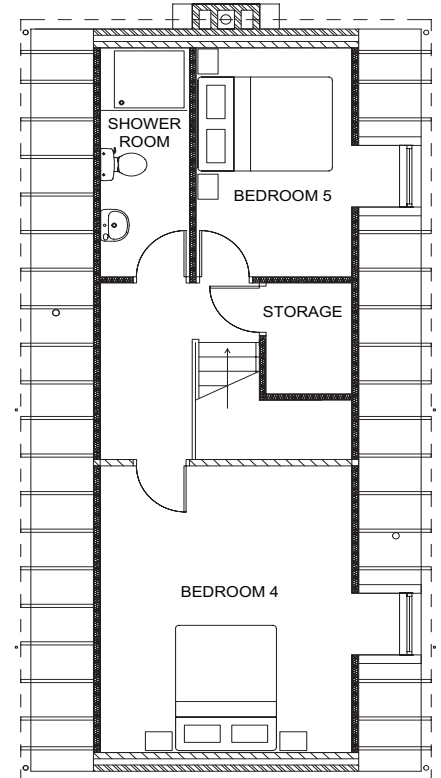
# Sandringham Cottage



Ground floor



First floor



Second floor

Illustration for information purposes only – please refer to Harwood for detailed information

