

Henrietta Way Richmond House

Elegant Georgian style four bedroom home offering adaptable accommodation
Built to a superior quality with conservation materials.



**Paul Martin
Homes**



£475,000

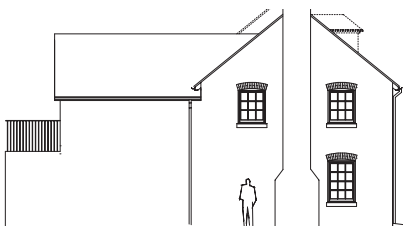
Bedrooms	4
Bathrooms / Ensuites	3
Total Floor Area	1751 ft ²
Garden / Patio Area	3100 ft ²
Energy Rating	A



Front Elevation



Rear Elevation



East Facing Elevation



West Facing Elevation

Ground floor

- Georgian style entrance door to reception hallway with easy access to cloakroom.
- Generous sized open plan kitchen / breakfast area. Show piece kitchen.
- Discreet utility area, with window to the rear
- A double aspect living room with featured log burner, running from the front to rear, and double doors opening onto terrace and gardens.

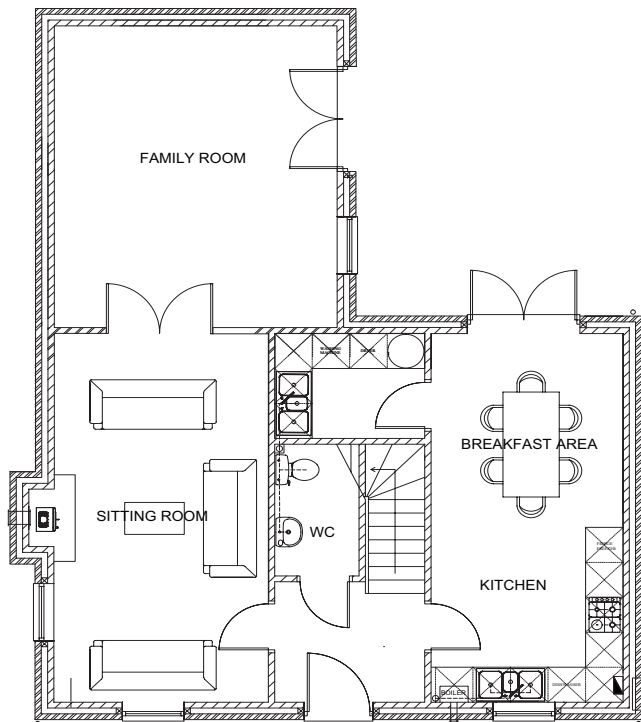
First floor

- Superb first floor master bedroom, with double aspect windows and views to front and rear, and doors leading to terraced area, with staircase leading down to gardens.
- Ensuite luxury shower room, with full width shower area.
- 3 further bedroom
- Family bathroom, with luxury bath and separate shower cubicle.

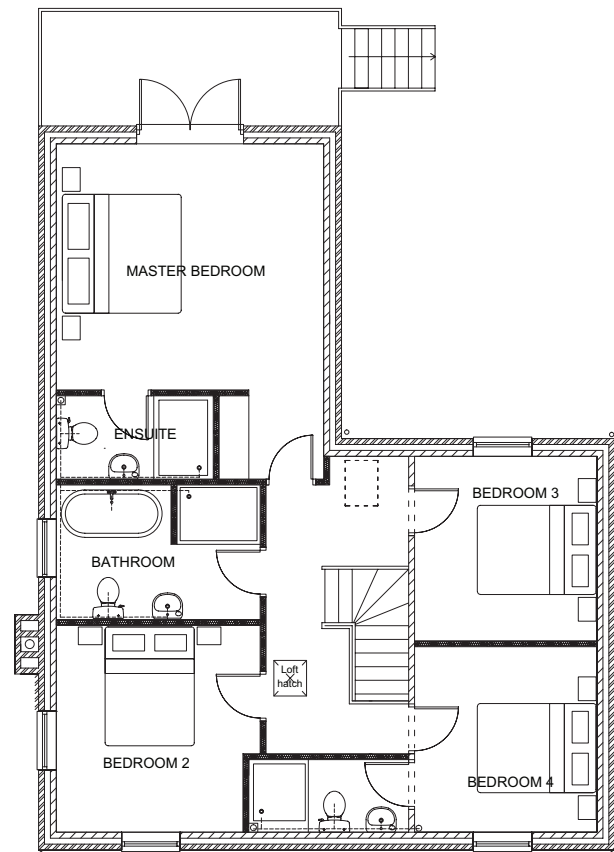
Outside

- At least two parking spaces.
- Landscaped gardens, with extremely generous garden to the rear, with terrace area with rural gorge views.

Richmond House



Ground floor



First floor

Illustration for information purposes only – please refer to Harwood for detailed information



HARWOOD
THE ESTATE AGENT

Tel: 01952 881010 | www.goharwood.co.uk
broseley@harwoodbroseley.co.uk