

Henrietta Way Oakwood Cottage

Elegant Georgian style three bedroom home offering adaptable accommodation
Built to a superior quality with conservation materials.



**Paul Martin
Homes**



£325,000

Bedrooms	3
Bathrooms	2
Total Floor Area	1356 ft²
Garden / Patio Area	2200 ft²
Energy Rating	A



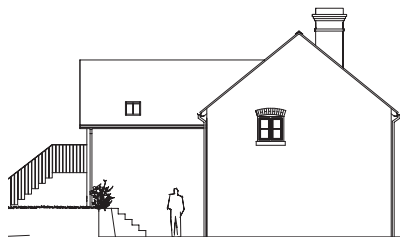
Front Elevation



Rear Elevation



East Facing Elevation



West Facing Elevation

Ground floor

- Georgian style entrance door to reception hallway with easy access to cloakroom.
- Generous sized open plan kitchen and separate breakfast area, with show piece kitchen, and doors from the breakfast area opening to gardens.
- Utility Room leading of kirchen.
- A pleasant living room, with twin windows to the front aspect and double doors through to breakfast area.

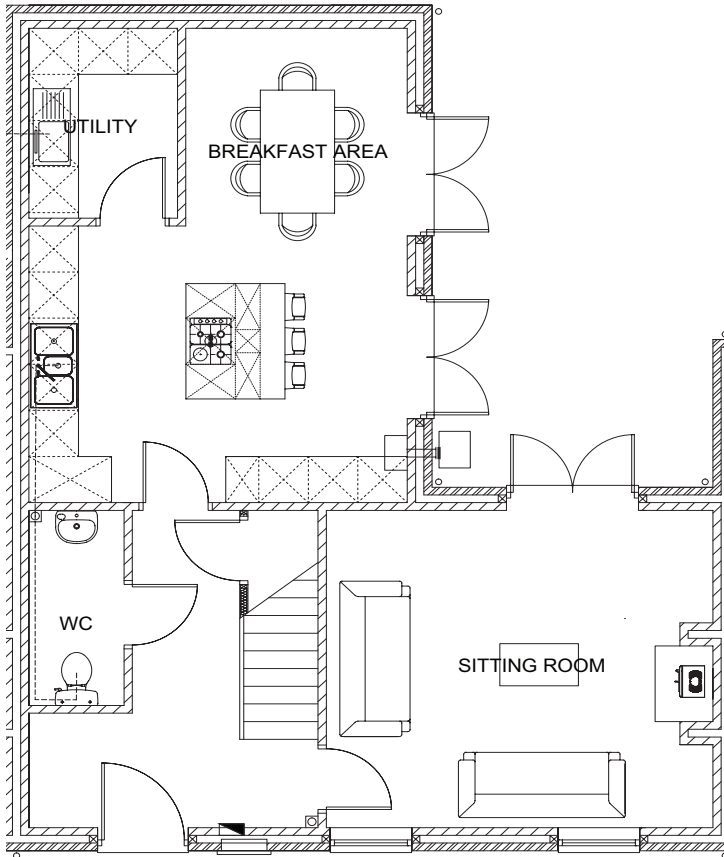
First floor

- Master bedroom with ensuite and window to the front.
- Two further bedrooms. One with double doors leading to rear terrace.
- Family bathroom, with luxury bath and separate shower cubicle.

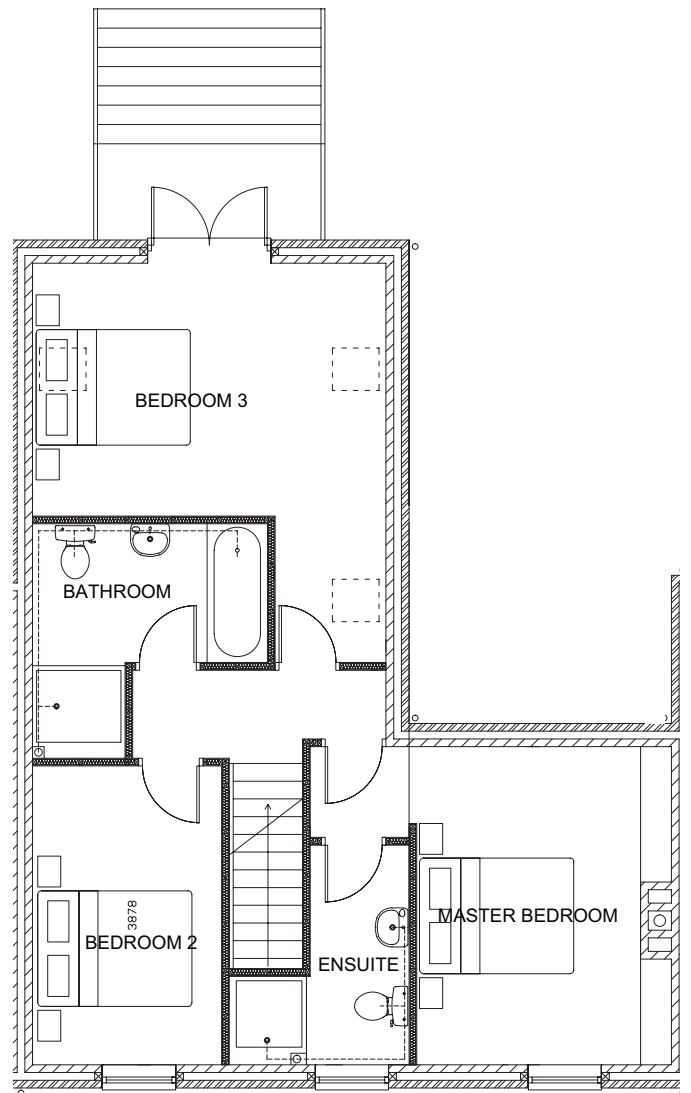
Outside

- Easily two parking spaces to the side of the property.
- Landscaped gardens, with extremely generous garden to the rear, with terrace area with rural gorge views.

Oakwood Cottage



Ground floor



First floor

Illustration for information purposes only – please refer to Harwood for detailed information

