



## Henrietta Way Drayton House

Elegant Georgian style four bedroom home offering adaptable accommodation  
Built to a superior quality with conservation materials.



**£475,000**

Bedrooms	<b>4</b>
Bathrooms / Ensuites	<b>3</b>
Total Floor Area	<b>1751 ft<sup>2</sup></b>
Garden / Patio Area	<b>3100 ft<sup>2</sup></b>
Energy Rating	<b>A</b>



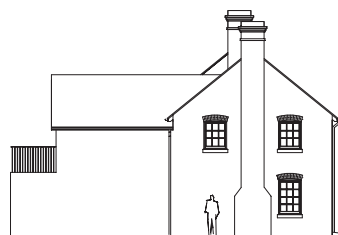
Front Elevation



Rear Elevation



East Facing Elevation



West Facing Elevation

### Ground floor

- Georgian style entrance door to reception hallway with easy access to cloakroom.
- Generous sized open plan kitchen / breakfast area. Show piece kitchen,
- Discreet utility area, with window to the rear.
- A living room with featured log burner, and a large family room with double doors opening onto terrace and gardens.

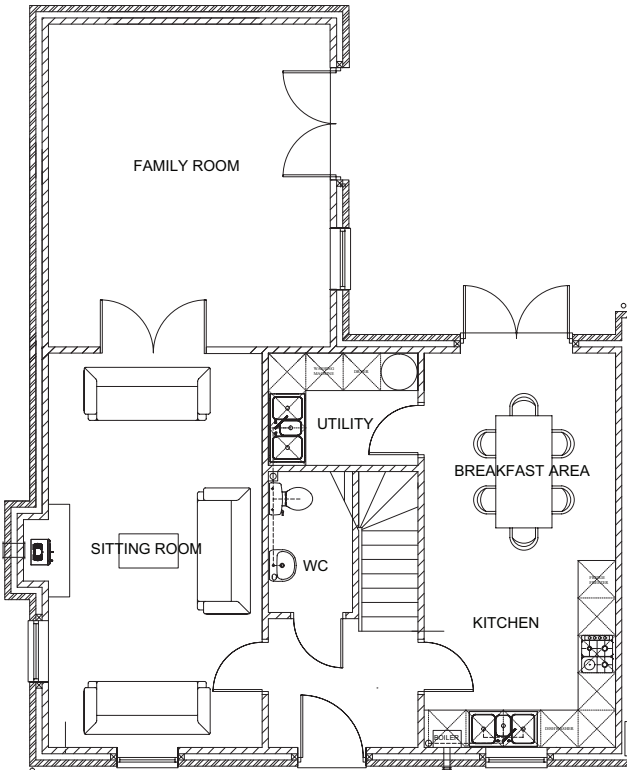
### First floor

- Superb first floor master bedroom, with double aspect windows and views to front and rear, and doors leading to terraced area, with staircase leading down to gardens.
- Ensuite luxury shower room, with full width shower area.
- 3 further bedroom.
- Family bathroom, with luxury bath and separate shower cubicle.

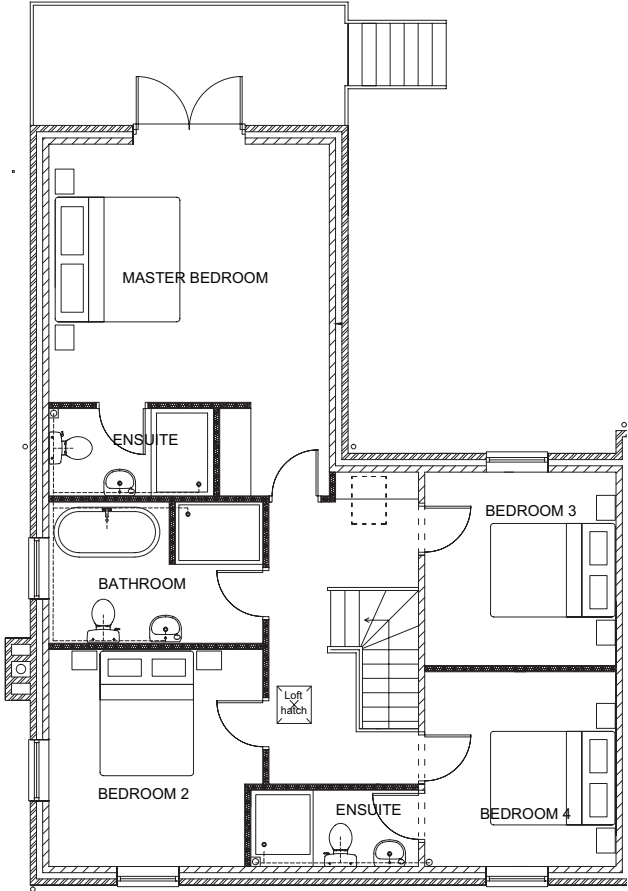
### Outside

- At least two parking spaces
- Landscaped gardens, with extremely generous garden to the rear, with terrace area with rural gorge views.

# Drayton House



Ground floor



First floor

Illustration for information purposes only – please refer to Harwood for detailed information

