

Henrietta Way Pembroke House

Elegant Georgian style four bedroom home offering adaptable accommodation
Built to a superior quality with conservation materials.



**Paul Martin
Homes**



£475,000

Bedrooms	4
Bathrooms / Ensuites	3
Garages	1
Total Floor Area	1858 ft²
Garden / Patio Area	3100 ft²
Energy Rating	A

Ground floor

- Georgian style entrance door to reception hallway with easy access to cloakroom.
- Generous sized open plan kitchen / breakfast area. Show piece kitchen, with integral door to garage.
- Discreet utility area, with window to the rear.
- A double aspect living room with featured log burner running from the front to rear, and double doors opening onto terrace and gardens.

First floor

- Superb first floor master bedroom, with double aspect windows and views to front and rear, and doors leading to terraced area, with staircase leading down to gardens.
- Ensuite luxury shower room, with full width shower area.
- A further bedroom with views to the rear
- Family bathroom, with luxury bath and separate shower cubicle.

Second Floor

- Two double bedrooms with dormer windows enjoying front aspect.
- Shower room.

Outside

- Ample parking leading to garage with separate doors.
- Landscaped gardens, with extremely generous garden to the rear, with terrace area with rural gorge views.



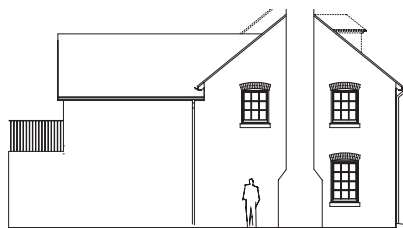
Front Elevation



Rear Elevation

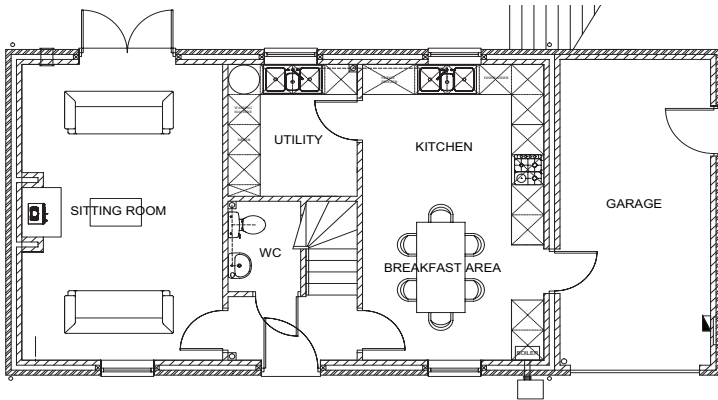


East Facing Elevation

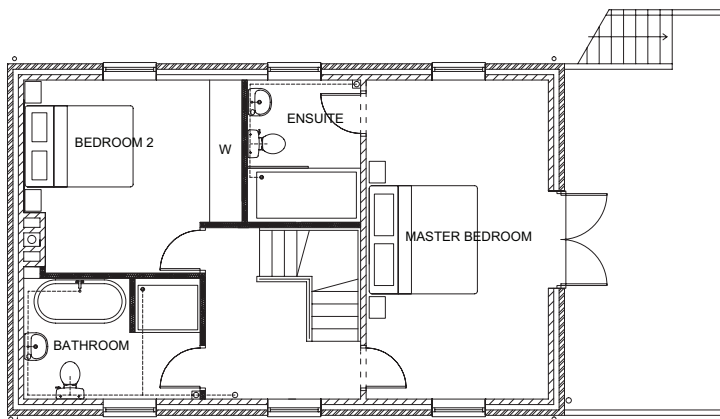


West Facing Elevation

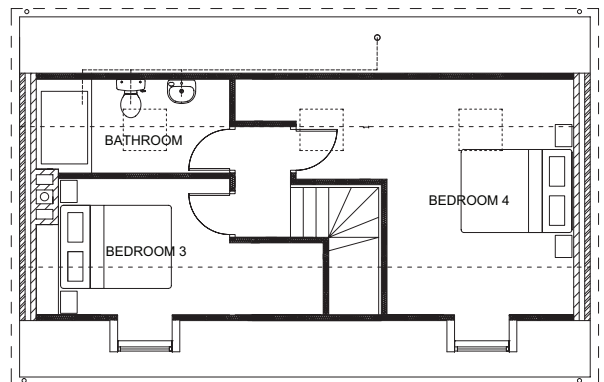
Pembroke House



Ground floor



First floor



Second floor

Illustration for information purposes only – please refer to Harwood for detailed information



HARWOOD
THE ESTATE AGENT

Tel: 01952 881010 | www.goharwood.co.uk
broseley@harwoodbroseley.co.uk