

Henrietta Way Leighton House

Elegant Georgian style five bedroom home offering adaptable accommodation
Built to a superior quality with conservation materials.



**Paul Martin
Homes**



£575,000

| | |
|-----------------------------|----------------------------|
| Bedrooms | 5 |
| Bathrooms / Ensuites | 3 |
| Garages | 1 |
| Total Floor Area | 2328 ft² |
| Garden / Patio Area | 2450 ft² |
| Energy Rating | A |

Ground floor

- Georgian style entrance door to reception hallway with easy access to cloakroom, and secondary door to utility and through to garage.
- Generous sized open plan kitchen dining room area and snug, with show piece kitchen, and doors opening to gardens, with part vaulted ceiling and extra window lights.
- A double aspect living room with featured log burner, running from the front to rear, double doors opening onto patio and gardens.

First floor

- Guest bedroom with windows overlooking views to front and rear.
- Two further bedrooms with rural outlooks.
- Family bathroom, with luxury bath and separate shower cubicle

Second Floor

- Master bedroom with double aspect windows front and rear, and bathroom ensuite leading off.
- Further double bedroom, with a generous ensuite shower room .

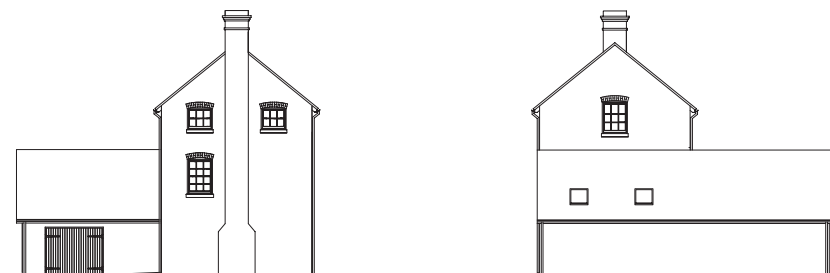
Outside

- Ample parking leading to large garage with separate doors.
- Landscaped gardens, with extremely generous garden to the rear, with terrace area with rural gorge views.



Front Elevation

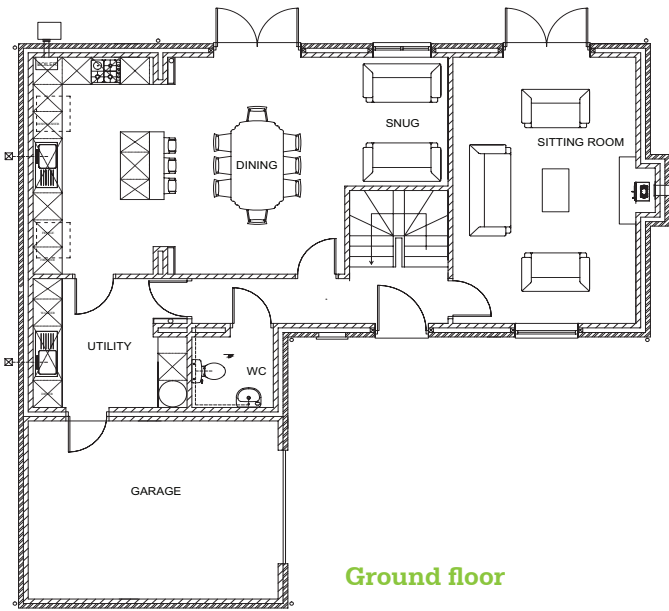
Rear Elevation



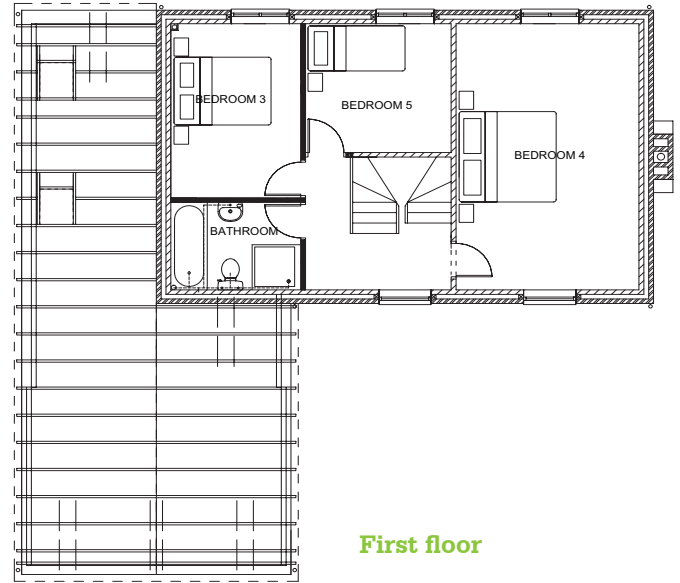
East Facing Elevation

West Facing Elevation

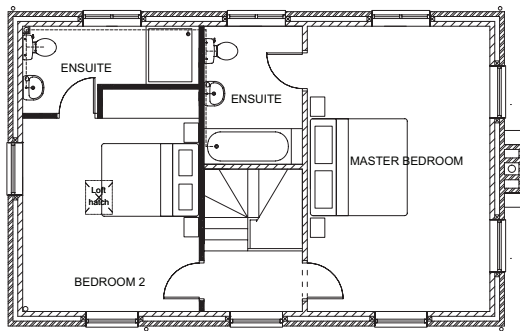
Leighton House



Ground floor



First floor



Second floor

Illustration for information purposes only – please refer to Harwood for detailed information

