

Woodlands Walk Cedar House

Newly constructed, large, elegant family home. Situated in this semi-rural location, yet near to both Ironbridge centre, all local amenities, and very close to the M54 motorway network.



Paul Martin
Homes



£499,950

Bedrooms	4
Garages	2
Family Bathrooms	1
Ensuites	3
Area	2040 sq.ft
Energy Rating	A



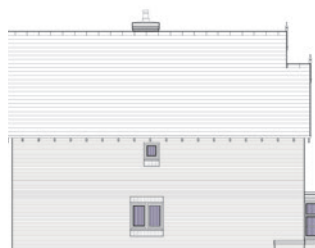
Rear Elevation



Side Elevation



Detached Double Garage - Front and Side Elevation



Side Elevation

Ground floor

- Entrance vestibule, reception hallway, with cloakroom off.
- Open plan showpiece kitchen, dining and family area, with bi-folding doors opening to garden.
- Discreet utility area.
- Double aspect spacious living room
- Third reception room, suitable for study or similar

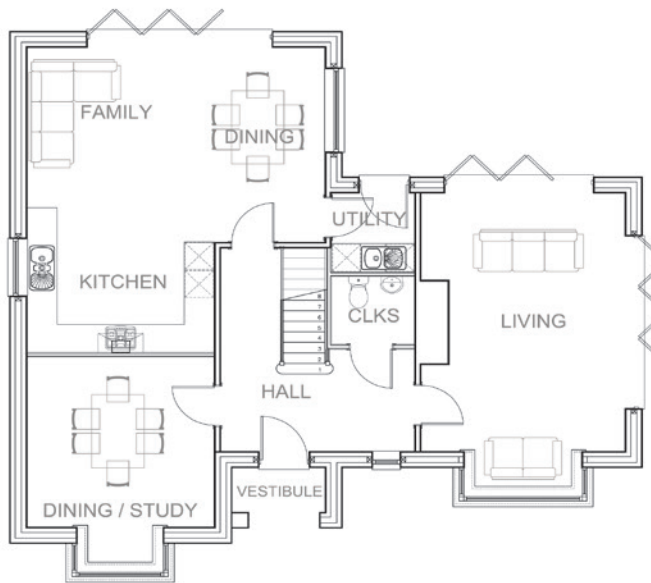
First floor

- Master bedroom with walk in dressing room and ensembles bathroom.
- Spacious landing with family bathroom and airing cupboard leading off.
- Two further double bedrooms with ensembles shower rooms
- Fourth bedroom with views over gardens.

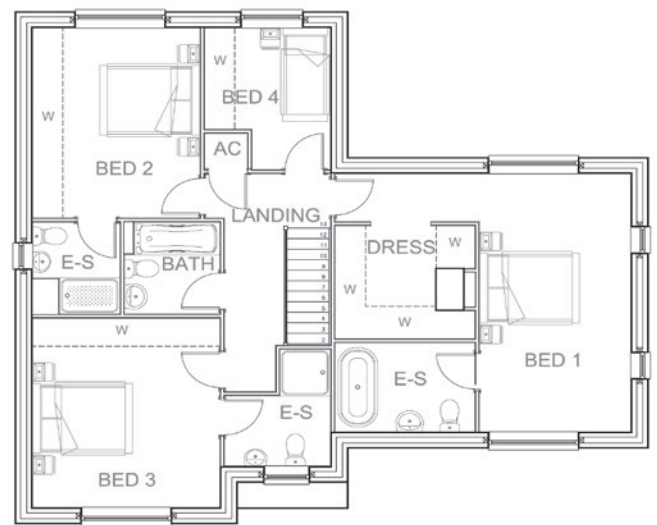
Outside

- Double garage & landscaped gardens.

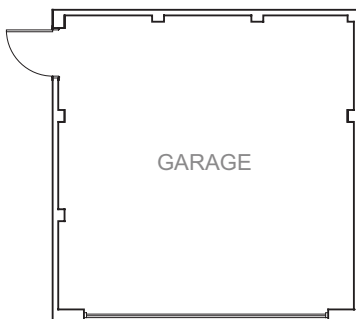
Cedar House



Ground floor



First floor



Detached Double Garage

