

Henrietta Way Caughley House

Elegant Georgian style five bedroom home offering adaptable accommodation
Built to a superior quality with conservation materials.



**Paul Martin
Homes**



£625,000

Bedrooms	5
Bathrooms	3
Garages	2
Total Floor Area	2571 ft²
Garden / Patio Area	2200 ft²
Energy Rating	A

Ground floor

- Georgian style entrance door to reception hallway with easy access to cloakroom.
- Generous sized open plan kitchen and separate breakfast area, with show piece kitchen, and doors from the breakfast area opening to gardens.
- A pleasant living room, with windows to the front and rear and featured log burner.

First floor

- Guest bedroom with window to the front and en-suite.
- Two further bedrooms.
- Family bathroom, with luxury bath and separate shower cubicle

Second floor

- Master bedroom with window to front and rear.
- Further bedroom with windows to front and rear.
- Jack and Jill en-suite.

Outside

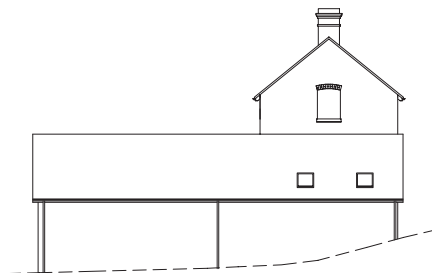
- Extensive parking leading to large double garage.
- Landscaped gardens, with terraced area to the rear.
- Private, long garden and terrace area to the rear, with rural gorge views.



Front Elevation



Rear Elevation

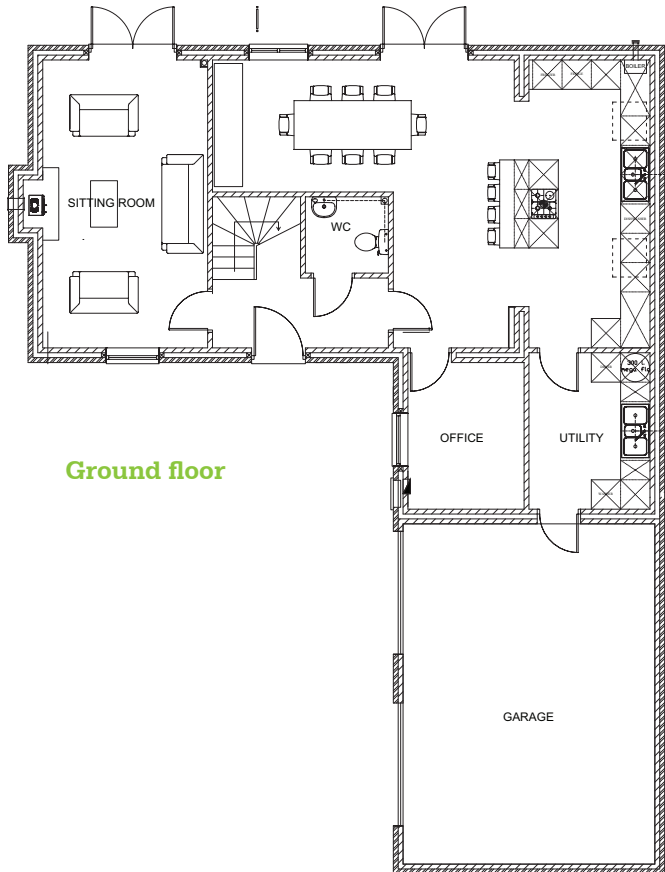


East Facing Elevation

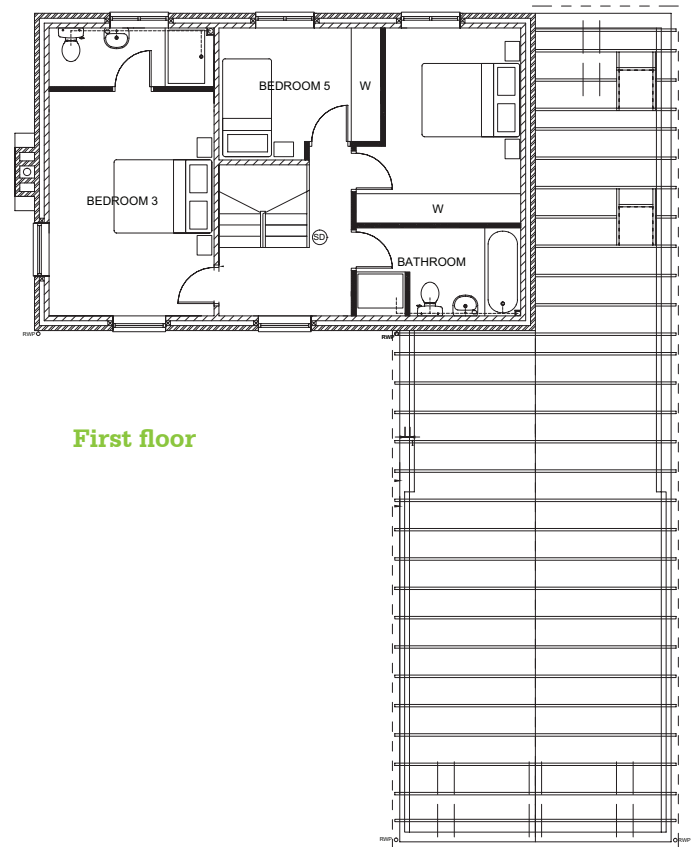


West Facing Elevation

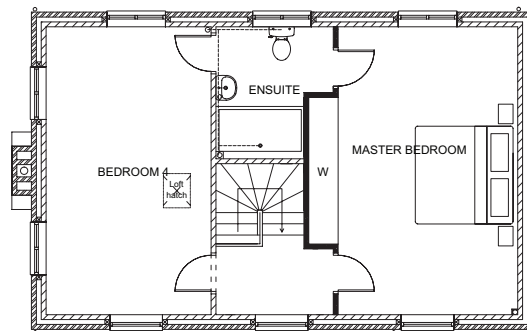
Caughley House



Ground floor



First floor



Second floor

Illustration for information purposes only – please refer to Harwood for detailed information



HARWOOD
THE ESTATE AGENT

Tel: 01952 881010 | www.goharwood.co.uk
broseley@harwoodbroseley.co.uk